

ZONING

SE 1/4 of Section 21 T3R2E WM



- Major Roads
 - State Route
 - Interstate
 - Arterial
 - Roads
- Easements
- Zoning
- Zoning Overlay
 - Airport Environs Overlay District
 - Columbia River Gorge Scenic Area
 - Contingent Zoning
 - Industrial Urban Reserve - 20
 - MDR Urban Reserve-Ridgefield
 - Mining Combining District
 - Urban Holding - 10 (UH-10)
 - Urban Holding - 20 (UH-20)
 - Urban Holding - 5 (UH-5)
 - Urban Reserve - 10 (UR-10)
- Municipal Jurisdiction
 - Unincorporated
 - Incorporated

CLARK COUNTY TITLE



Plot Date: Jul 16, 2013
Map produced by:

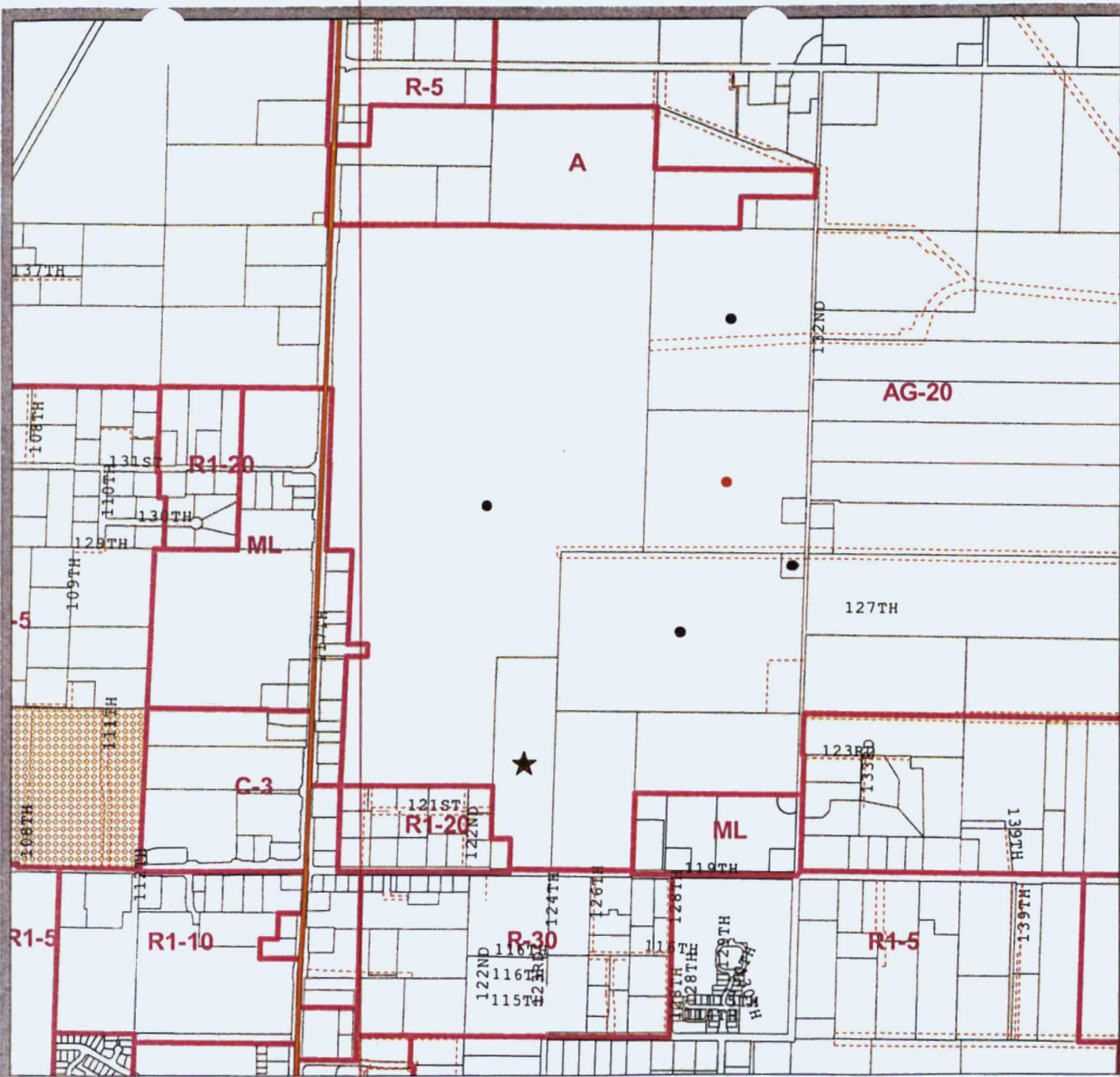
Information shown on this map was collected from several sources. Neither Clark County or the agency producing this document accept responsibility for any inaccuracies that may be present.



(Scale 1:3000) 100010Q080000 Feet

ZONING

NE 1/4 of Section 27 T3R2E WM



- Major Roads
 - State Route
 - Interstate
 - Arterial
 - Roads
 - Easements
- Zoning
 - Zoning Overlay
 - Airport Environs Overlay District
 - Columbia River Gorge Scenic Area
 - Contingent Zoning
 - Industrial Urban Reserve - 20
 - MDR Urban Reserve-Ridgefield
 - Mining Combining District
 - Urban Holding - 10 (UH-10)
 - Urban Holding - 20 (UH-20)
 - Urban Holding - 5 (UH-5)
 - Urban Reserve - 10 (UR-10)
 - Municipal Jurisdiction
 - Unincorporated
 - Incorporated

CLARK COUNTY TITLE



Plot Date: Jul 17, 2013
Map produced by:

Information shown on this map was collected from several sources. Neither Clark County or the agency producing this document accept responsibility for any inaccuracies that may be present.



(Scale 1:4500) 10000 FEET

