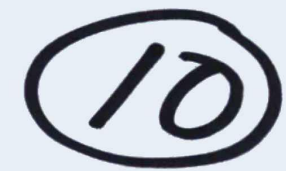


(Scale 1:3000) 100010Q080800 Feet

WATER, SEWER & STORM

SE 1/4 of Section 21 T3R2E WM



- Fire Stations and Hydrants
- Sanitary Sewer Lines
- Water Lines
- Storm Sewer
- Major Roads
- State Route
- Interstate
- Arterial Roads
- Easements

CLARK COUNTY TITLE



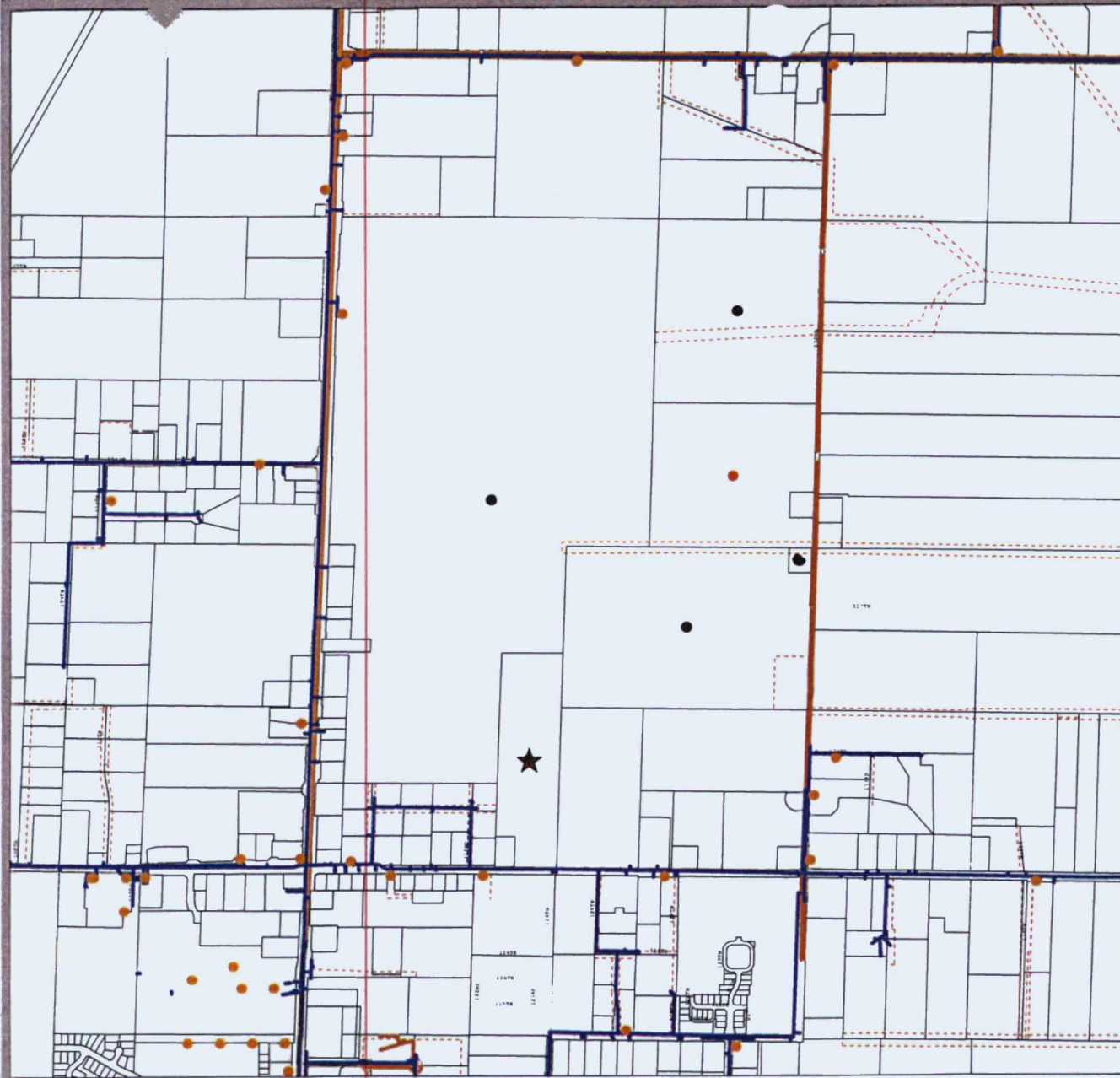
Plot Date: Jul 16, 2013
Map produced by:

Information shown on this map was collected from several sources. Neither Clark County or the agency producing this document accept responsibility for any inaccuracies that may be present.



WATER, SEWER & STORM

NE 1/4 of Section 27 T3R2E WM



- Fire Stations and Hydrants
- Sanitary Sewer Lines
- Water Lines
- Storm Sewer
- Major Roads
- State Route
- Interstate
- Arterial Roads
- - - Easements

CLARK COUNTY TITLE



Plot Date: Jul 17, 2013
Map produced by:

Information shown on this map was collected from several sources. Neither Clark County or the agency producing this document accept responsibility for any inaccuracies that may be present.



(Scale 1:4500) 10000000 Feet

