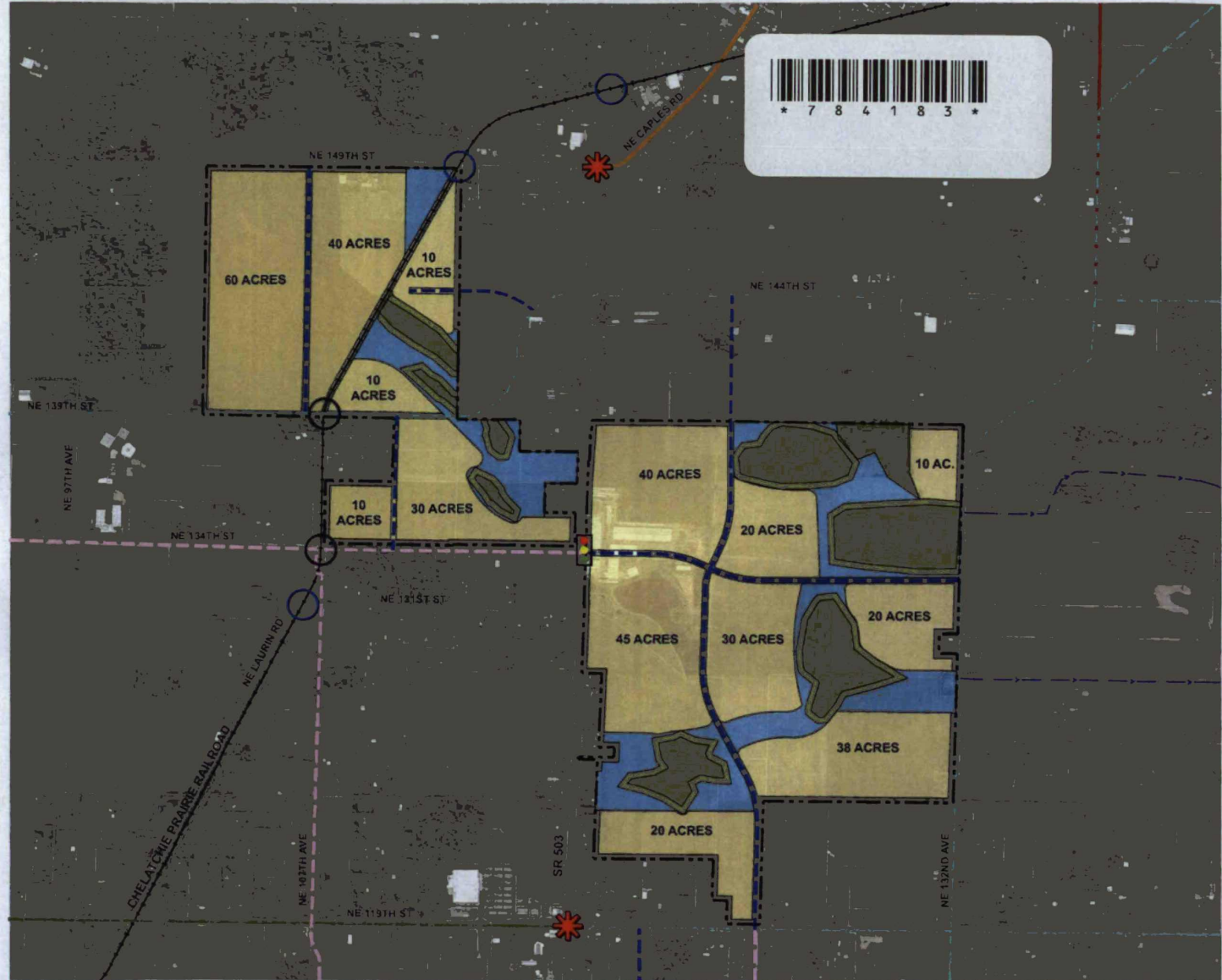
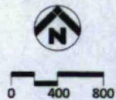


LEGEND

- PROPERTY LINE
- DRAINAGE DITCH
- RAILROAD
- WETLANDS
- WETLAND BUFFER
- WATER QUALITY
- DEVELOPABLE ACREAGE
- PROPOSED TRAFFIC SIGNAL
- VEHICULAR CROSSING WITH EXISTING TRAFFIC SIGNAL
- EXISTING RAILROAD CROSSING
- PROPOSED RAILROAD CROSSING

- ARTERIAL CLASSIFICATIONS**
- INDUSTRIAL
 - COLLECTOR - 2 LANE
 - MINOR ARTERIAL - 3 LANE
 - MINOR ARTERIAL - 5 LANE W/ BIKE
 - RURAL MINOR
 - RURAL MAJOR

TOTAL	600 ACRES
WETLANDS	66 ACRES
WETLAND BUFFERS	26 ACRES
STORM SYSTEM	71 ACRES
DEVELOPABLE LAND	383 ACRES
ROW & SETBACKS	54 ACRES
-ROADS ROW (60')	
-RAILROAD ROW (60')	
-PERIMETER SETBACK (50')	



CLARK COUNTY RURAL INDUSTRIAL LAND BANK
LAND USE ANALYSIS
 JULY 2015

MacKay + Spósito